

OncoImmunitin, Inc.

Application Note #1: Flow Cytometry Analysis **Updated 11/12/04 for CaspaLux® 9-M₁D₂**

Substrate composition and fluorescence characteristics:

- ☞ Each substrate molecule contains a peptide homodoubly labeled with a fluorophore. The cleaved substrate has the following excitation and emission peaks: λ_{ex} =505 nm and λ_{em} =530 nm. (The fluorescence of the intact, *i.e.*, precleaved, fluorogenic protease substrate is not completely quenched (*vide infra*))
- ☞ The main peptide amino acid sequence is LEH**D**GI where the P₁ and P₁' residues are in **red** and **blue**, respectively.

Components: This upstream caspase 9 substrate reagent kit (Cat. # CPL9R1L-3) contains 4 vials. Each vial contains at least 565 μ l of 10 μ M substrate in RPMI 1640 medium with 25 mM HEPES. Additionally, 1 bottle containing 60 ml of flow cytometry dilution buffer is included. The entire unopened kit can be stored at room temperature or 4 °C. If any of the reagent-containing vials are opened, then store at -10 to -20 °C. Prior to restoring, vials should be lightly centrifuged to remove any liquid from caps. Upon thawing: shake until the solution appears homogeneous.

Possible additional reagent needed: 250 μ l of fetal calf serum (FCS).

Incubation conditions:

Remove all steps involving fixation or permeabilization from your protocol. Do not fix substrate-exposed cells for labeling with antibody or other reagents.

1. Treat target cells with chosen apoptosis-inducing reagent (apoptogen) and/or inhibitor. Two control samples, one with and one without the vehicle (organic cosolvent), should be included in every sample set. The concentration of vehicle should not exceed 0.5% (v/v) (0.1% is preferable). (As mentioned in E below the FL1 peak channel as well as possible scatter changes for caspase-negative cells with and without vehicle should be determined to avoid false conclusions.)
2. After treatment, aliquot cells into 1.5 to 2.0 ml microcentrifuge tubes, centrifuge and then remove **all culture medium** in order to minimize subsequent substrate dilution. Suggestions: (i) Avoid high speed table top centrifuges; use centrifugation conditions similar to normal handling of cells. (ii) A gentle vacuum suction equipped with a fine tip, e.g., a pipette tip, is suggested.
3. To each of the centrifuged cell pellets, add 75 μ l of 10 μ M substrate solution (add 8 μ l of FCS, if 10% FCS is appropriate). The cell number should be between 0.5 and 1 million per sample (See A and B below). Mix cell suspensions with substrate by flicking tubes with finger tips. **Do not vortex tubes containing cells as apoptotic cells can be "fragile"**.
4. Incubate tubes at 37 °C for 60 minutes before flow cytometric analysis. (See C below.) Keep substrate at physiological pH: avoid direct light to substrate as well as exposure to extremes of pH.

Sample preparation for and measurement by flow cytometry:

5. Wash cells once by adding 1 ml of flow cytometry dilution buffer, centrifuging, and removing all medium and buffer. Loosen cell pellets by flicking tubes with finger tips and then resuspending loosened pellets in 1 ml of fresh dilution buffer. **Do not vortex tubes containing cells, but rather flick tubes with finger tips to resuspend cells. Apoptotic cells can be fragile. (See below.)** All samples should be analyzed within 60 to 90 minutes after the end of the 37°C incubation.
6. Recommended flow cytometer settings: excitation with a 488 nm laser line and detection in the FL1 channel of a BD or similar instrument. Set the peak channel for cells from control cell population (absence of apoptogen (with vehicle, if appropriate)) in the first decade. Then run apoptogen-treated cell populations.
7. After collecting data by the preceding procedure, one can delete PI-positive cells if *ca.* 10 μ l of a 5-10 μ g/ml propidium iodide (PI) solution is added and samples are rerun on the flow cytometer (final PI concentration of *ca.* 200 ng/ml) with a dot plot of FL1 vs. FL3 (or FL2) (See D). Reanalysis should be *within 5-15 minutes of PI addition*.

Useful Hints & Warnings:

- A. The cell density during incubation with the substrate should be between 0.5 and 1.0 million cells per sample (although lower concentrations are analyzable). It is recommended that a control sample with the cells taken directly from culture with cells in log phase be included in the assay to test whether there is any high cell density-induced apoptosis.
- B. In certain settings, one may be able to use the substrate at a concentration lower than 9 μ M (addition of FCS to a final concentration of 10% v/v would lower the substrate concentration to 9 μ M (*vide supra*)). **However, the kit has been formulated with the substrate concentration at 10 μ M for optimal performance under most conditions.**

- C. Viable cell uptake of the substrate reaches a near maximum between 20 and 30 minutes at 37°C in most cell types. However, as substrate uptake may vary with cell type and specific conditions, incubation times should be optimized.
- D. It is recommended that in order to identify PI-negative apoptotic and uninduced cell populations analysis first be carried out in the absence of PI followed by a second round of data collection after PI addition. **Sample dilution volume should be the same for all samples.** A comparison between the dot plots (FL1 vs. FL3 (or FL2)) of these two sets of samples will enable easy identification of PI-negative populations as those cells that remain in the same location in the two sets of dot plots. Thus, if a gate is placed around the PI-negative cells and cells within this gate are then be plotted in an FL1 histogram, this methodology will result in analysis of both uninduced and apoptotic PI-negative cells.
- E. If a population of cells with very low fluorescence intensity, *i.e.*, lower than the uninduced cell population, appears, then more than likely (i) the samples have been overinduced and/or (ii) the final vehicle concentration has lead to toxicity. Therefore, a vehicle control sample should be included.

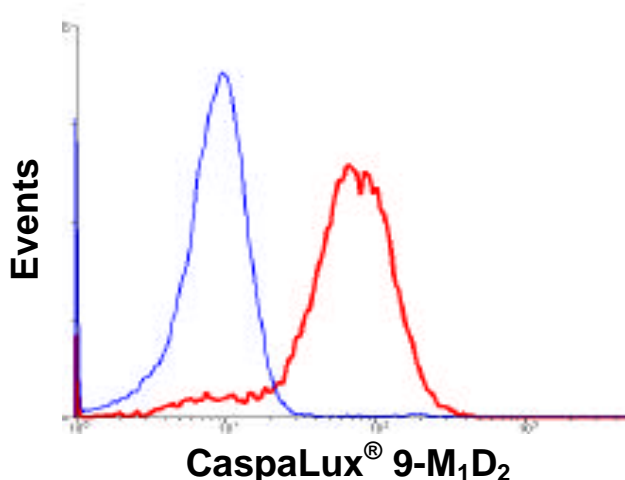
In order to see the brightest apoptotic cell populations in histograms, cells must retain their membrane integrity. Please note: **the principle upon which all OncoImmunitin substrates work is that the intact substrates diffuse across all membranes, *i.e.*, plasma as well as intracellular membranes, by passive diffusion; once the substrates have been recognized and cleaved by their cognate proteases, the cleaved fragments are largely retained on the side of the membrane where the proteases reside. Thus, cleaved substrate fragments generate a positive signal in PI-negative cells and once a cell loses its membrane integrity as indicated by PI positivity, the cleaved fragments are free to diffuse out of the cell.** Since the fluorescence of intact substrates is not completely quenched, uninduced populations of cells loaded with substrate have higher fluorescence than cells which have not been exposed to substrates (See Figure 3 in reference 14.) Thus, if the permeability barrier of live cells with intact membranes is lost in cases such as overinduction or exposure to high concentrations of organic cosolvents, then intact as well as cleaved fragments may be lost from induced cells.

In some cases it may be informative to analyze early time points where caspase activation has not yet taken place to see if test compounds themselves induce membrane permeability changes by noting a decrease in the peak channel number. Generally, cells in samples with a high percentage of PI-positive or TUNEL assay positive cells will be in late apoptosis and/or necrosis. Use of CaspaLux® 9-M₁D₂ is optimal with samples containing a low percentage of PI-positive cells.

In most cases it is recommended to lower the apoptogen concentration rather than simply looking for an earlier time point. Appropriate time points for analysis of CaspaLux® 9-positive cells should be such that a large percentage of PI-negative cells is present: ideally, samples should contain **both** uninduced and caspase⁺/PI⁻ cells. Conditions under which only a single population is observable should be avoided. Examination of cells under a fluorescence microscope may assist in determining exact apoptosis inducing conditions.

A1.1 Cells + CaspaLux® 9-M₁D₂

+Vehicle Control
+Staurosporine (1 μM)



Application Note #2 : Fluorescence Microscopy

Updated 11/12/04

Incubation conditions:

Remove all steps involving fixation or permeabilization from your protocol. Do not fix substrate-exposed cells for labeling with antibody or other reagents.

In most cell cultures a few percent cells are in default death; these should be used as positive controls. In the rare cases where there is no default death, treatment with an established apoptogen, e.g., 1 μ M Staurosporine, is recommended for generating positive controls.

I. Standard (nonconfocal) fluorescence microscope application

1. Treat target cells with chosen apoptosis-inducing reagent (apoptogen) and/or inhibitor. Two control samples, one with and one without the vehicle (organic cosolvent), should be included in every sample set. The concentration of vehicle should not exceed 0.5% (v/v) (0.1% is preferable). (As mentioned in E above for flow cytometry possible changes for caspase-negative cells with and without vehicle should be determined to avoid false conclusions.)
2. (a) For suspension cells aliquot cells into 1.5 to 2.0 ml microcentrifuge tubes, centrifuge and then remove **all culture medium** in order to minimize subsequent substrate dilution. A gentle vacuum suction equipped with a fine tip, e.g., a pipette tip, is suggested. (b) For adherent cells, remove all culture medium.
3. (a) For suspension cells, to each of the centrifuged cell pellets, add 75 μ l of 10 μ M substrate solution (add 8 μ l of FCS, if 10% FCS is appropriate). The cell number should be between 0.5 and 1 million per sample (See A and B above). Mix suspension containing cells and substrate by flicking tubes with finger tips. **Do not vortex tubes containing cells as apoptotic cells can be "fragile"**. (b) For adherent cells, add enough substrate solution to completely cover the monolayer or individual cells. As with suspension cells, be sure to remove all medium before addition of substrate-containing solution to minimize dilution of substrate. (For adherent cells cell culture dishes with glass coverslips attached to the bottom side is recommended. (Contact OncoImmunit, Inc. for the source of such cell culture dishes.))
4. Incubate suspension cell samples in tubes or adherent cells at 37°C for 30 to 60 minutes. Exact incubation times are cell type and inducer specific. Keep substrate at physiological pH: avoid direct light to substrate as well as exposure to extremes of pH.
5. Immediately following incubation with CaspaLux® 9 substrate solution: (a) for suspension cells dilute with 1 ml of the Flow Cytometry Buffer or any physiological buffer, e.g., PBS, centrifuge, and replace the supernatant with 1 ml of fresh buffer. Repeat cell washing (typically two to four more times) depending on fluorescence microscope's lamp power and detection capability. Check cells after each wash under the fluorescence microscope to see if the background fluorescence is dark enough to distinguish between untreated control and treated cells (b) for adherent cells remove CaspaLux® 9 substrate solution and wash gently with buffer. Perform a similar number of cell washing cycles as recommended for suspension cell samples. After each cycle observe the background fluorescence level under the fluorescence microscope. Take special care in washing adherent cells since apoptotic cells are generally more easily detached from the plate than nonapoptotic cells. Therefore, it is recommended that all washes be saved until positive cells are recognizable.
6. Recommended microscopy settings are fluorescein filters.

II. Confocal microscope application

Due to the presence of pinholes in confocal instruments and their optical filtering effect washing steps can be deleted. Thus, one can have the substrate present throughout the experiment or add the substrate at any time during a given experiment.

The substrate concentration appropriate for this type of experiment should be less than the stock concentration of 10 μ M. It is recommended that a series of substrate dilutions ranging from 5 down to 1 μ M be carried out.

When using a confocal microscope, setting the appropriate detector gains and laser power settings is essential. Generally, in any cell culture, there is a small number of apoptotic cells, *i.e.* cells in default death. Use of the latter in combination with healthy control cells can serve as limits for setting the dynamic range. A good starting point is to use the signal from the default death cells as 90% of the maximum and the healthy cells as the negative or lower signal level.

Nota bene: at various substrate concentrations, a lower pixel signal intensity for the intracellular domain of healthy cells compared with those pixel intensities of the extracellular domain will often be observed. This is due to the intact cells' membrane permeability barrier. When a given caspase activity is activated followed by cleavage of the cognate protease substrate, the intracellular pixel intensity level will be elevated above the extracellular pixel intensity due to dequenching of the substrate. If the pixel intensity of the cytoplasmic area only reaches the extracellular intensity level, then one cannot unequivocally declare at that time point that this fluorescence intensity increase is due to the caspase activity alone as a mere membrane permeability increase of given cells alone could account for this increase. However, the intensity increase above that associated with the background substrate solution can only be possible if the fluorescence of the fluorophores conjugated to the substrate is dequenched by the target caspase's actions on the intact substrate by cleaving the substrate into two fragments.

References (representative but incomplete as of 11/12/04):

On Exciton theory used in fluorogenic protease substrate design:

1. B.Z. Packard, D.D. Toptygin, A. Komoriya, and L. Brand. Profluorescent protease substrates: intramolecular dimers described by the exciton model. **Proc. Natl. Acad. Sci. (USA)** 93: 11640-11645 (1996).
2. B.Z. Packard, D.D. Toptygin, A. Komoriya, and L. Brand. The design of profluorescent protease substrates guided by exciton theory. **Meth. Enzym.** 278: 15-28 (1997).
3. B.Z. Packard, A. Komoriya, D.D. Toptygin, and L. Brand. Structural characteristics of fluorophores which form intramolecular H-type dimers in a protease substrate. **J. Phys. Chem. B** 101: 5070-5074 (1997).
4. B.Z. Packard, D.D. Toptygin, A. Komoriya, and L. Brand. Characterization of fluorescence quenching in bifluorophoric protease substrates. **Biophys. Chem.** 67: 167-176 (1997).
5. B. Z. Packard, D.D. Toptygin, A. Komoriya, and L. Brand. Intramolecular resonance dipole-dipole interactions in a protease substrate. **J. Phys. Chem. B** 102: 752-758 (1998).
6. B.Z. Packard, A. Komoriya, V. Nanda, and L. Brand. Intramolecular excitonic dimers in protease substrates: modification of the backbone moiety to probe the H-dimer structure. **J. Phys. Chem. B** 102: 1820-1827 (1998).
7. B.Z. Packard and A. Komoriya. A method in enzymology for measuring intracellular protease activities in live cells. **Meth. Enzym.** (in press).

Publications in which OncoImmunin, Inc.'s substrates have been used with live cells:

8. A. Komoriya, B. Z. Packard, M. J. Brown, M.-L. Wu, and P. A. Henkart. Assessment of Caspase Activities in Intact Apoptotic Thymocytes Using Cell-permeable Fluorogenic Caspase Substrates. **J. Exp. Med.** 191:1819-1828 (2000).
9. B.Z. Packard, A. Komoriya, T.M. Brotz, and P.A. Henkart. Caspase 8 activity in membrane blebs after anti-Fas ligation. **J. Immunology** 167:5061-5066 (2001).
10. L. Liu, A. Chahroudi, G. Silvestri, M.E. Wernett, W.J. Kaiser, J.T. Safritz, A. Komoriya, J.D. Altman, B.Z. Packard, and M.B. Feinberg. Visualization and quantitation of T cell-mediated cytotoxicity using cell-permeable fluorogenic caspase substrates. **Nature Med.** 8:185-189 (2002).
11. S.H. Chang, K.J. Harvey, M. Cvetanovic, A. Komoriya, B.Z. Packard, and D.S. Ucker. The Effector Phase of Physiological Cell Death Relies Exclusively on the Post-translational Activation of Resident Components. **Exp. Cell Res.** 277:15-30 (2002).
12. W.G. Telford, A. Komoriya, and B.Z. Packard. Detection of Localized Caspase Activity in Early Apoptotic Cells by Laser Scanning Cytometry. **Cytometry** 47:81-88 (2002).
13. L. Liu, B.Z. Packard, M.J. Brown, A. Komoriya, and M.B. Feinberg. Assessment of lymphocyte-mediated cytotoxicity using flow cytometry. **Meth. Mol. Biol.** 263:125-40 (2004).
14. W.G. Telford, A. Komoriya, and B.Z. Packard. Multiparametric analysis of apoptosis by flow and image cytometry. **Meth. Mol. Biol.** 263:141-60 (2004).
15. H. Hirata, A. Takahashi, S. Kobayashi, S. Yonehara, H. Sawai, T. Okasaki, K. Yamamoto, and M. Sasada. Caspases are activated in a branched protease cascade and control distinct downstream processes in Fas-induced apoptosis. **J. Exp. Med.** 187:587-600 (1998).
16. J. M. Zapata, R. Takahashi, G.S. Salvesen and J.C. Reed. Granzyme release and caspase activation in activated human T-lymphocytes. **J. Biol. Chem.** 273:6916-6920 (1998).
17. R.M. Siegel, D.A. Martin, L.Zheng, S.Y. Ng, J. Cohen, and M.J. Lenardo. Death-effector filaments: novel cytoplasmic structures that recruit caspases and trigger apoptosis. **J. Cell Biol.** 141:1243-1253 (1998).
18. L. Guedez, W.G. Stetler-Stevenson, L. Wolff, J. Wang, P. Fukushima, A. Mansoor, M. Stetler-Stevenson. In vitro suppression of programmed cell death of B cells by tissue inhibitor of metalloproteinases-1. **J. Clin. Invest.** 102:2002-10 (1998).
19. P.G. Ekert, J. Silke and D.L. Vaux. Inhibition of apoptosis and clonogenic survival of cells expressing crmA variants: optimal caspase substrates are not necessarily optimal inhibitors. **EMBO J.** 18:330-338 (1999).
20. D.M. Finucane, E. Bossy-Wetzel, N.J. Waterhouse, T.G. Cotter and D.R. Green. Bax-induced caspase activation and apoptosis via cytochrome c release from mitochondria is inhibitable by Bcl-xL. **J. Biol. Chem.** 274:2225-2233 (1999).
21. G.I. Perez, X-J. Tao and J.L. Tilly. Fragmentation and death (a.k.a. apoptosis) of ovulated oocytes. **Molecular Human Reproduction** 5:414-420 (1999).
22. R. Robles, X-J. Tao, A.M. Trbovich, D.V. Maravei, R. Nahum, G.L. Perez, K.L. Tilly and J.L. Tilly. Localization, regulation and possible consequence of apoptotic protease activating factor-1(Apaf-1) expression in granulosa cells of the mouse ovary. **Endocrinology** 140:2641-2644 (1999).
23. H. Kanuka, S. Hisahara, K. Sawamoto, S. Shoji, H. Okano and M. Miura. Proapoptotic activity of *Caenorhabditis elegans* CED-4 protein in *Drosophila*: Implicated mechanisms for caspase activation. **Proc. Natl. Acad. Sci.** 96:145-150 (1999).
24. B. Huppertz, H.-G. Frank, and P. Kaufmann. The apoptosis cascade -- morphological and immunohistochemical methods for its visualization. **Anat. Embryol.** 200:1-18 (1999).
25. B. Huppertz, H.-G. Frank, F. Reister, J. Kingdom, H. Korr, and P. Kaufmann. Apoptosis Cascade Progresses during Turnover of Human Trophoblast: Analysis of Villous Cytotrophoblast and Syncytial Fragments in Vitro. **Laboratory Investigation** 79:1687-1702 (1999).
26. K.J. Harvey, D. Lukovic, and D.S. Ucker. Caspase-dependent Cdk activity is a requisite effector of apoptotic death events. **J. Cell Biol.** 148:59-72 (2000).
27. B.W. Johnson, E. Cepero, and L.H. Boise. Bcl-xL Inhibits Cytochrome c Release but not Mitochondrial Depolarization during the Activation of Multiple Death Pathways by Tumor Necrosis Factor- α . **J. Biol. Chem.** 275:31546-31553 (2000).
28. S.S. Metkar, B. Wang, M.L. Ebbs, J.H. Kim, Y.J. Lee, S.M. Raja and C.J. Froelich. Granzyme B activates procaspase-3 which signals a mitochondrial amplification loop for maximal apoptosis. **J. Cell Biol.** 160:875-885 (2003).
29. P.V. Bozhkov, L.H. Filonova, M.F. Suarez, A. Helmersson, A.P. Smertenko, B. Zhivotovsky and S. von Arnold. VEIDase is a principal caspase-like activity involved in plant programmed cell death and essential for embryonic pattern formation. **Cell Death Differentiation** 11:175-182 (2004).
30. Y. Wang, Kuroda M, Gao X.S, Akaki S, Asaumi J, Okumura Y, Shibuya K, Kawasaki S, Joja I, Kato H, Himeji K, Dendo S, Kanazawa S, Hiraki Y. Cepharanthine enhances in vitro and in vivo thermosensitivity of a mouse fibrosarcoma, FSa-II, based on increased apoptosis. **Int J Mol Med.** 13:405-11 (2004).

31. M. Ejercito and J. Wolfe. Caspase-like activity is required for programmed nuclear elimination during conjugation in Tetrahymena. **J. Eukaryot. Microbiol.** 50:427-9 (2003).
32. T. Kondo, T. Kitano, K. Iwai, M. Watanabe, Y. Taguchi, T. Yabu, H. Umehara, N. Domae, T. Uchiyama, and T. Okazaki. Control of ceramide-induced apoptosis by IGF-1: involvement of PI-3 kinase, caspase-3 and catalase. **Cell Death Differ.** 9:682-92 (2002).
33. J. Kluzka, A. Lansiaux, N. Watzet, M.P. Hildebrand, S. Leonce, A. Pierre, J.A. Hickman, and C. Bailly. Induction of apoptosis in HL-60 leukemia and B16 melanoma cells by the acronycine derivative S23906-1. **Biochem Pharmacol.** 63:1443-52. (2002).
34. N. Lee, S. Bertholet, A. Debrabant, J. Muller, R. Duncan, H.L. Nakhasi. Programmed cell death in the unicellular protozoan parasite Leishmania. **Cell Death Differ.** 9:53-64 (2002).
35. K. Suzuki, S. Kostin, V. Person, A. Elsasser, and J. Schaper. Time course of the apoptotic cascade and effects of caspase inhibitors in adult rat ventricular cardiomyocytes. **Mol. Cell Cardiol.** 33:983-94 (2001).
36. N. Schrantz, M.T. Auffredou, M.F. Bourgeade, L. Besnault, G. Leca, and A. Vazquez. Zinc-mediated regulation of caspases activity: dose-dependent inhibition or activation of caspase-3 in the human Burkitt lymphoma B cells (Ramos). **Cell Death Differ.** 8:152-61 (2001).
37. A. Takahashi, K. Kono, H. Amemiya, H. Iizuka, H. Fujii, and Y. Matsumoto. Elevated caspase-3 activity in peripheral blood T cells coexists with increased degree of T-cell apoptosis and down-regulation of TCR zeta molecules in patients with gastric cancer. **Clin. Cancer Res.** 7:74-80 (2001).
38. Z. Xia, A. Bergstrand, J.W. DePierre, and L. Nassberger. The antidepressants imipramine, clomipramine, and citalopram induce apoptosis in human acute myeloid leukemia HL-60 cells via caspase-3 activation. **J Biochem Mol. Toxicol.** 13:338-47 (1999).
39. H. Suzuki, J. Wu., K. Hossain, T. Ohhata, J. Du, A. Akhand, A. Hayakawa, H. Kimura, M. Hagiwara and I. Nakashia. Involvement of MKK6 in TCR β intCD69lo: a target population for apoptotic cell death in thymocytes. **FASEB J.** 17:1538-1540 (2003).
40. Y. Wang *et al.* Cepharranthine enhances *in vitro* and *in vivo* thermosensitivity of a mouse fibrosarcoma Fsa-II, based on increased apoptosis. **Internat. J. Molec. Med.** 13:405-11 (2004).
41. T.Q. Nhan, W.C. Liles, A. Chait, J.T. Fallon, and S.M. Schwartz. The p17 Cleaved Form of Caspase-3 Is Present Within Viable Macrophages In Vitro and in Atherosclerotic Plaque. **Arterioscler. Thromb. Vasc. Biol.** 23:1276-82 (2003).
42. C.S. Adams and I.M. Shapiro. Mechanisms by which extracellular matrix components induce osteoblast apoptosis. **Connect Tissue Res.** 44:230-9 (2003).
43. Roth Z. and P.J. Hansen. Sphingosine 1-Phosphate Protects Bovine Oocytes from Heat Shock During Maturation. and Involvement of Apoptosis in Disruption of Developmental Competence of Bovine Oocytes by Heat Shock During Maturation **Biol Reprod.** (2004).
44. A. Nopp, J. Lundahl, and H. Stridh. Caspase activation in the absence of mitochondrial changes in granulocyte apoptosis. **Clinical and Exp. Immunol.** 128:267-74 (2002).
45. A.K. Yi, Yoon JG, Krieg AM. onvergence of CpG DNA- and BCR-mediated signals at the c-Jun N-terminal kinase and NF-kappaB activation pathways: regulation by mitogen-activated protein kinases. **Int. Immunol.** 15:577-91 (2003).
46. A.A.A. Mohamed, O.J. Jupp, H.M. Anderson, A.F. Littlejohn, P. Vandenabeele and D.J. Macewan. Tumour necrosis factor-induced activation of c-Jun N-terminal kinase is sensitive to caspase-dependent modulation while activation of mitogen-activated protein kinase (MAPK) or p38 MAPK is not. **Biochem. J.** 366:145-155 (2002).
47. H. Zieler and J.A. Dvorak. Invasion *in vitro* of mosquito midgut cells by the malaria parasite proceeds by a conserved mechanism and results in death of the invaded midgut cells. **Proc Natl Acad Sci U S A.** 97: 11516-21 (2000).
48. D.L. Barber, E.J. Wherry and R. Ahmed. Cutting Edge: Rapid In Vivo Killing by Memory CD8 T Cells. **J. Immunology** 171: 27-31 (2003).
49. Y. Xu, A.J. Szalai, T. Zhou, K.R. Zinn, T.R. Chaudhuri, X. L, W.J. Koopman and R. P. Kimberly. FcRs Modulate Cytotoxicity of Anti-Fas Antibodies: Implications for Agonistic Antibody-Based Therapeutics. **J. Immunology** 171:562-568 (2003).
50. Lichterfeld, M., Yu XG, Waring MT, Mui SK, Johnston MN, Cohen D, Addo MM, Zaunders J, Alter G, Pae E, Strick D, Allen TM, Rosenberg ES, Walker BD, Altfeld, M. HIV-1-specific cytotoxicity is preferentially mediated by a subset of CD8⁺ T cells producing both interferon-gamma and tumor necrosis factor-alpha. **Blood.** 104:487-94 (2004).

